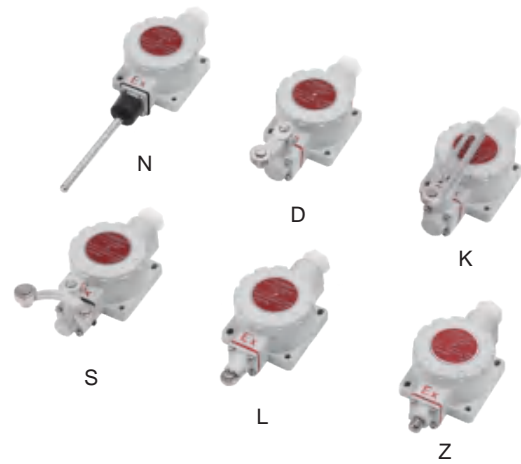
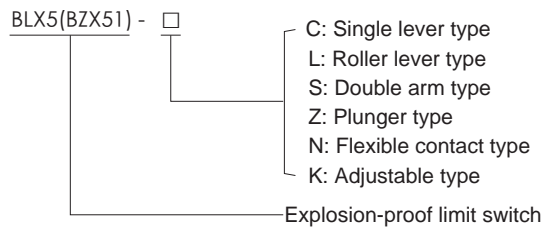


Application

- Widely used in hazardous environments such as petroleum, refining, chemical, pharmaceutical, and military industries
- Suitable for offshore oil platforms and tanker operations
- Applicable to explosive gas environments Zone 1 and Zone 2
- Suitable for Class II A, II B explosive gas environments
- Applicable to combustible dust environments Zone 21 and Zone 22
- Suitable for temperature classes T1–T6

Model Description



Product Features

- Enclosure manufactured from ZL102 die-cast aluminum alloy with high-voltage electrostatic powder coating for excellent corrosion resistance.
- Reliable explosion-proof performance with flexible and responsive operation.
- Suitable for both steel conduit wiring and armored cable installations.
- Robust mechanical design ensures stable performance in harsh industrial environments.
- Compact structure allows easy installation and maintenance.
- Designed for long-term operation in hazardous areas requiring dependable position detection and control.

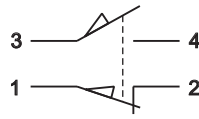
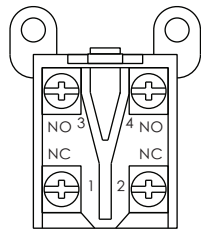
Main Technical Parameters (BLX5 – Ex d IIC)

Explosion-proof Marking	Ex d II C T6 Gb / Ex tD A21 IP66 T80°C	Rated Voltage	AC220V/AC380V
Protection Rating	IP65	Rated Current	10A
Anti-corrosion Grade	WF1	Cable Entry	G1/2"
Contact Configuration	1NO + 1NC	Cable Diameter	φ 6mm~φ 12mm
Standards	GB3836 / GB12476 (Equivalent to IEC 60079)		

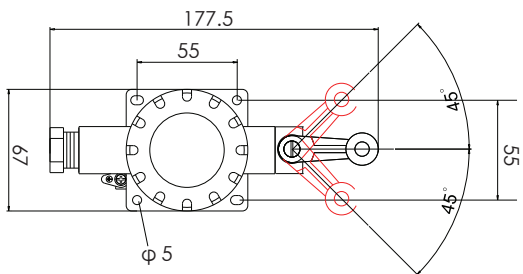
Selection Table

Model	Rated Voltage	Rated Current	Contact Configuration	Operating Type	Description
BLX5(BZX51)-D	AC220V/380V	10A	1NO + 1NC	Automatic reset	Single lever type
BLX5(BZX51)-L	AC220V/380V	10A	1NO + 1NC	Automatic reset	Roller lever type
BLX5(BZX51)-S	AC220V/380V	10A	1NO + 1NC	Manual reset	Double arm type
BLX5(BZX51)-Z	AC220V/380V	10A	1NO + 1NC	Automatic reset	Plunger type
BLX5(BZX51)-N	AC220V/380V	10A	1NO + 1NC	Automatic reset	Flexible contact type
BLX5(BZX51)-K	AV220V/380V	10A	1NO + 1NC	Automatic reset	Adjustable type

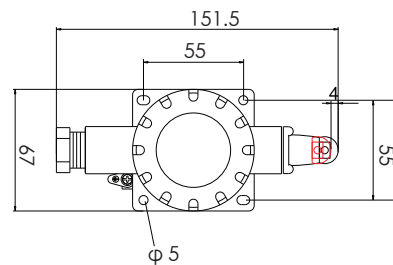
Contact Configuration Diagram



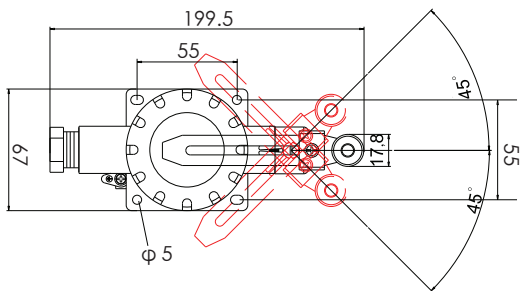
Outline Dimensions



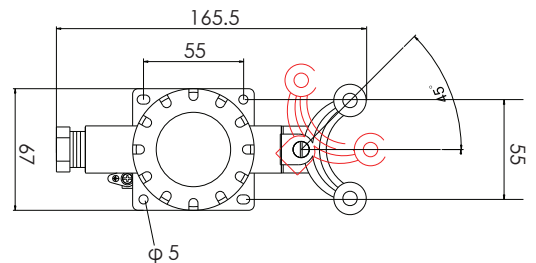
BLX5(BZX51)-D



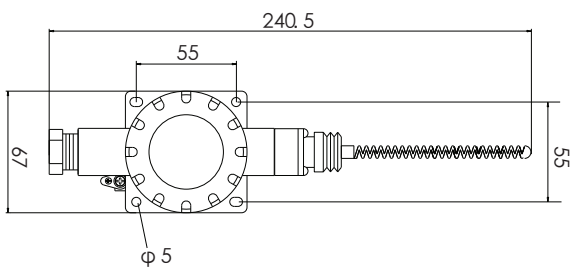
BLX5(BZX51)-L



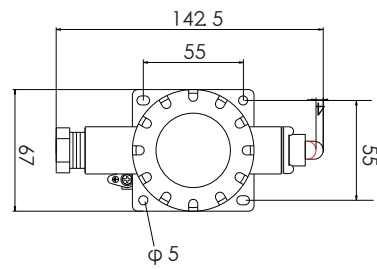
BLX5(BZX51)-K



BLX5(BZX51)-L



BLX5(BZX51)-N



BLX5(BZX51)-K